



Preparation For Adulthood Navigators Quarter 2 Report

Abi Taylor
Abi@paccshropshire.org.uk

Contents

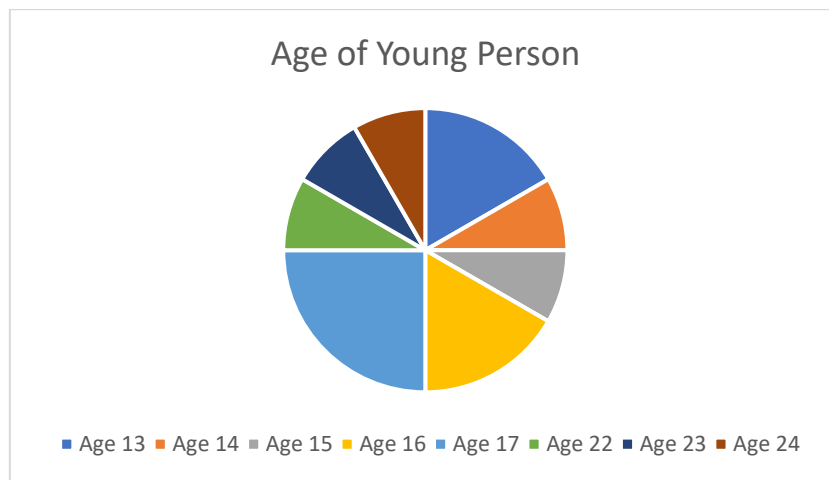
	Page
Enquiries.....	
Number of sessions delivered.....	
Meetings with Practitioners/ Teams.....	
Promotional Activity.....	
Training undertaken by Navigators.....	
Outcomes/ Referrals/ Outputs.....	
Key Issues and Themes.....	
Plan for Next Quarter.....	

Enquiries

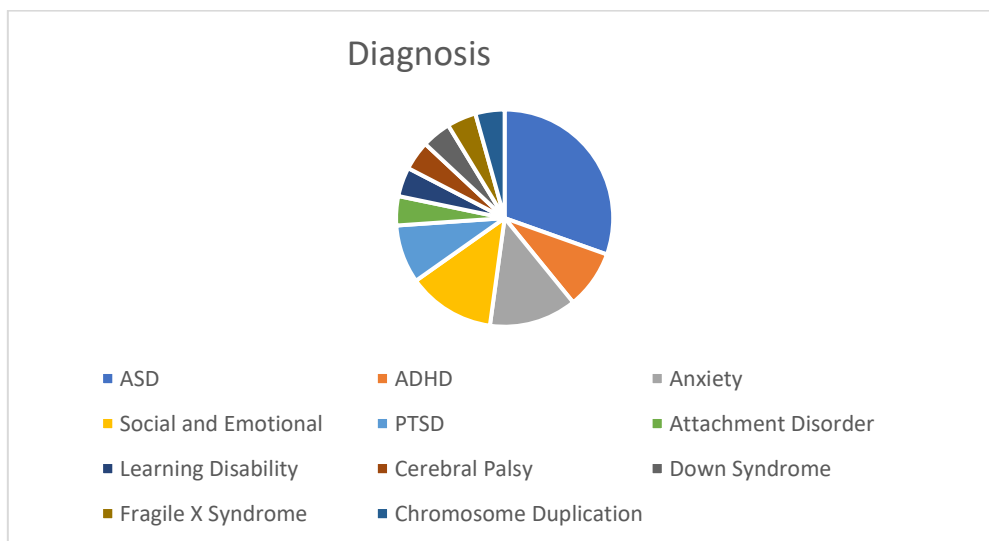
During Quarter Two, Parent and Carer Council Shropshire's (PACC) Preparation for Adulthood (PFA) Navigators have had contact with 19 new Parent Carers.

This has included signposting on Facebook; engaging through discussions on Facebook groups; responding to emails enquiring about services; Face to Face conversation at events. From these initial enquiries/ conversation 12 Parent Carers have required further information and have attended a 1:1 meeting with PACC Navigators.

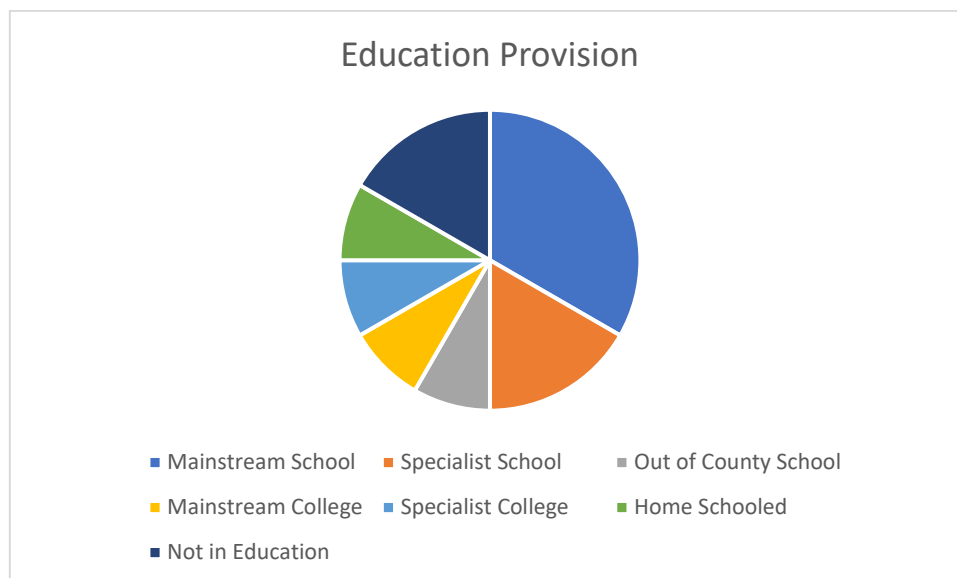
The age range of Young People that Parent Carers have contacted us regarding range from 13-24 years.



Diagnosis of Young People include Autism; Learning Disability; ADHD; Down Syndrome and Chromosome Duplication.



Education Provision of Young people include Mainstream school; Specialist school; Mainstream college; Specialist College; Out of County School; Not in education.



Number of Sessions delivered

Initial emails of enquiry are followed up with an email and an invite to a Teams meeting/ phone call, the total initial teams calls delivered this quarter is 12. Following this meeting, an email is sent signposting to all services/ activities discussed with the Parent Carer. Depending on the outcome of the call, Parent Carers are either made aware to contact us if they require any further assistance or follow up calls are arranged.

At PACC's Buddies Social Network events, a PFA Navigator has attended 7 out of 8 events this quarter. This gives families we have signposted to the activities a chance to see a familiar face, meet other families and also talk through any updates since they last spoke to the navigator. On average 20 families attend sessions, and the navigator has engaged with approximately 27 families at these sessions, over this quarter.

In addition to new enquires, contact is ongoing with 4 families from Q1.

Meetings with Practitioners/ Teams

- Navigators meet with PFA Lead at Shropshire Council on a monthly basis; Designated Social Care Officer for SEND at Shropshire Council on a monthly basis; and are still working to identify key contact within the SEND Team at Shropshire Council.
- Ongoing contact with Ben Kovacs at Shrewsbury Colleges Group, to see how PFA Navigators can support any existing events and potential to create new events.
- Post 16 Network meeting- both navigators attend these meetings.
- Local Offer- Coproducing the PFA section on the local offer with PFA at local authority.

- Condoover College- Navigator attended open event and met with staff to look at day services, therapy services and respite offer.
- Derwen College- Navigator attended open day and discussed navigators giving a presentation to parent carers.
- Worked with Shrewsbury Colleges group and Local authority to promote a new Supported Internship Opportunity- including collecting feedback from young people who have already completed supported internships.

Promotional Activity

Promotional material has been made outlining what is available through contacting PACC's PFA Navigators. This has been sent by email to all Parent Carers of 14–25-year old's on the PACC database; has been shared over relevant PACC Facebook groups; has been emailed to all Secondary Schools and Colleges and asked to be forwarded to relevant families. Information about the PFA Navigators is shared in monthly PACC newsletters, in addition a Q and A section has been focused on PFA enquiries and given further information on key areas such as EHCP's, Activity plans, communicating with school and School Avoidance.

PREPARING FOR ADULthood

- ★ Do you know what Further Education Options are available?
- ★ Are you aware of Activities and Provisions they can access?
- ★ Do you know what benefits are available?
- ★ Have you explored Employment or Volunteering Opportunities?
- ★ Is your young person having Annual Health checks?
- ★ Does your young person know how to stay healthy?
- ★ Is your young person part of the local community?

Our Preparation for Adulthood Navigators can help you to understand what options are available and where to access provisions and support.

Please contact our PFA Navigators:
Email:
Abi@paccshropshire.org.uk
Denise@paccshropshire.org.uk

Or call our PFA Helpline:
(01743) 622 055
Our phonenumber is open 9:30-2:30
Monday to Friday

**Preparation for Adulthood
How can I contact PACC?**

Email:
Abi@paccshropshire.org.uk
Denise@paccshropshire.org.uk
Or call our PFA Helpline:
(01743) 622 055
Our phonenumber is open 9:30-2:30 Monday
to Friday

PACC
unlocking doors
together
PFA Navigator Role

A promo poster has also been sent to our mailing list of parent carers, as well as being sent to our database of education provisions.

Preparation for Adulthood

What is Preparation for Adulthood (PFA)?

Our early life experiences help us to prepare for life as an adult, and this should be recognised as early as possible, although there is an expectation that Young People with SEND focus on PFA from Year 9.

Conversations about a young person's future should involve themselves, their parents, carers, their teachers and anyone else who works with them.

What areas does PFA cover?

PFA covers all areas of your Young Person's life that will enable them to have the best outcomes as the enter adulthood, including:

- Further education
- Activity Plans
- Finance and Benefits
- Employment, and Volunteering
- Mental Health Checks
- Staying Healthy
- Being Part of the local community

How does our PFA journey start?

Planning for transition into adulthood should start from the Year 9 annual review of the E-C plan. Each review thereafter must focus on preparing for adulthood- including the move between children's and adults services outside of education.

The transition towards adulthood review from Year 9 will start to gather information regarding the young persons and their families' aspirations for their future, including who needs to be involved, target planning and the support needed. The review will explore provision accessible to students in order for them to be healthy, participating in society, living independently, and accessing further education and/or employment where appropriate.

For more information, please contact our PFA Navigators

 Abi@pacshropshire.org.uk
Denise@pacshropshire.org.uk



In addition, a promo for the event at Shrewsbury Colleges Group has been shared on social media and as a direct mail out.

**INCLUSIVE LEARNING
ADVICE EVENING**

FIND OUT ABOUT OUR GREAT RANGE OF COURSES

Meet our teachers, pastoral care teams and **Shropshire Parent and Carer Council's Preparation for Adulthood Navigators** for an informal chat and coffee.

Discover more about how we help our students **achieve and progress** in a nurturing environment with **wrap-around support**.

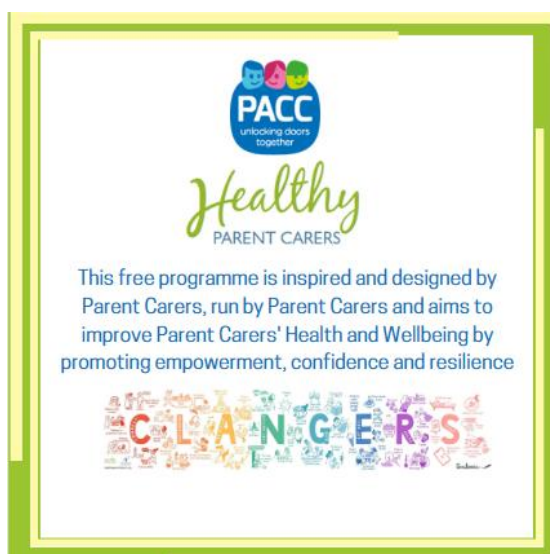
Tuesday 23 May, 5.00-6.30pm
London Road Campus, SY2 6PR

SHREWSBURY COLLEGES GROUP

Book Your Place at
shrews.co/inclusivelearningAE



The Healthy Parent Carer Programme has also been promoted via Social Media and Newsletters aimed at Parent Carers of 14-25 year olds. More info: [Home – Healthy Parent Carers](#).



Training undertaken by Navigators

- One Page Profile: e-learning course
- Independent Advocacy under the Care Act 2014: e-learning course
- Determining eligibility under the Care Act 2014 e-learning course
- Mental Capacity Act (MCA): e-learning course
- Deprivation of liberty safeguarding
- Navigating through the Deputyship process
- NHS Continuing Care: the legal limits of social care responsibilities for children & young people
- Education, Health, & Care Plans Post 16+
- PA Noticeboard Training (Shropshire Council)

Outcomes/ Referrals/ Outputs

- 3 young people have joined and attended Buddies Social Network Events.
- 4 Parent Carers were provided with signposting to services and information and have not needed further support. This includes information on finances and benefits, information on post-16 education provision and information on power of attorney.
- A number of young people the navigator has spoken to at Buddies have now joined activities attended by other PFA families.
- Contact has been made with the Local Authority to query direct payment issues.
- A parent-carer has secured an out of county educational provision placement and received support through this process from navigators.
- A family are receiving respite support and support from a CAMHS nurse following signposting and support from navigators.

Key Themes and Issues

All Parent Carers that have contacted us have had no clear information given to them previously around PFA options and Pathways. Key topics that we have covered this quarter include:

- Activity Plans- suitable activity provisions that can meet the needs of their young person.
- Social interaction and opportunities for young people to socialise outside of their educational setting/ without parent carer organising
- Financial support and benefits
- Next steps- when young people are approaching the end of Secondary School
 - further education or training options: this includes unclear criteria for college applications and a limited option of educational provisions for high functioning young people with social and emotional needs.
- Options and Opportunities for young people who's EHCP's have ceased.

Specific issues from quarter 2:

- Unclear of options post college.
- Limited social opportunities for high functioning young person with anxiety issues.
- School refusal and mental health concerns.
- Lack of support for Parent Carer to support young person's mental health needs.
- Unable to access direct payments to attend swimming lessons.
- Not being informed of PFA or outcomes at Year 9 annual review.
- Unaware of training and employment opportunity for young person with limited social skills.
- Issues with direct payments to access support for young person.
- Struggling to understand finances for young person.
- Concerns with secondary schools provision and support being offered.
- Parent Carer being informed young persons EHCP was being ceased with no options for next steps.
- Lack of support with young person with Emotionally Based School Avoidance, where school were not meeting the young persons needs.

Plans for Next Quarter

1. To engage further with Secondary Schools and Colleges in Shropshire.
2. To attend any existing transition opportunities at Education Provisions and work with providers to create new opportunities.
3. To deliver an EHCP workshop for Parent Carers of 14–25-year-olds
4. To increase awareness of PFA Navigators through promotional material and direct mail outs.